

Annual Statistics 2021

FEFCO ANNUAL STATISTICS 2021

<u>Tables:</u>	Page
Key Statistics	2
Total Shipments (Millions of m ²) (including Non-Members)	3
Total Shipments ('000 Tonnes) (including Non-Members)	4
Shipments of Member Companies (Millions of m ²)	5
Shipments of Member Companies ('000 Tonnes)	6
Total Number of Companies (including Non-Members)	7
Total Number of Plants (including Non-Members)	8
Total Number of Corrugators (including Non-Members)	9
Average Weight of Board in g/m ² (including Non-Members)	10
Die Cut Boxes (as % of total shipments in m ²) (including Non-Members & Sheetplants)	11
Total Consumption of Raw Materials ('000 Tonnes) (including Non-Members)	12
Consumption of White or Colored Kraftliner (as % of total consumption of Raw Materials)	13
Consumption of Brown Kraftliner (as % of total consumption of Raw Materials)	14
Consumption of White Top Testliner (as % of total consumption of Raw Materials)	15
Consumption of Testliners (as % of total consumption of Raw Materials)	16
Consumption of Other Liners	17
Consumption of Semi-Chemical Fluting (as % of total consumption of Raw Materials)	18
Consumption of Recycled Fluting (as % of total consumption of Raw Materials)	19
Total Number of Personnel	20
Production per Head ('000 m ²)	21
Nominal Working Time per Person (Hours per Year)	22
Shipments to CONVERTERS	23
Shipments to TRADERS	24
Classification by End Use	(seperate sheet) 25
Fluting Types in % of total shipments	(seperate sheet) 26
Printing Colours	(seperate sheet) 27
Diagramms	28-32

FEFCO ANNUAL REPORT 2021 Key Statistics

	2020	2021	% Change
Total Shipments (Millions of m ²) (including Non-Members)	51.496	55.722	8,2
Total Shipments ('000 Tonnes) (including Non-Members)	25.949	28.019	8,0
Shipments of Member Companies (Millions of m ²)	34.879	37.530	7,6
Shipments of Member Companies ('000 Tonnes)	19.474	18.944	-2,8
Total Number of Companies (including Non-Members)	378	389	2,8
Total Number of Plants (including Non-Members)	651	663	1,8
Average Weight of Board in g/m ² (including Non-Members)	504	503	-0,2
Total Consumption of Raw Materials ('000 Tonnes) (including Non-Members)	21.393	23.409	9,4
Consumption of White or Colored Kraftliner as % of total consumption of Raw Materials	6,0	5,6	-7,1
Consumption of Brown Kraftliner as % of total consumption of Raw Materials	13,1	12,4	-5,6
Consumption of White Top Testliner as % of total consumption of Raw Materials	6,7	7,1	5,6
Consumption of Testliner as % of total consumption of Raw Materials	31,8	33,4	4,8
Consumption of Other Recycled Liner as % of total consumption of Raw Materials	3,3	2,9	-13,8
Consumption of Semi-chemical Fluting as % of total consumption of Raw Materials	2,8	2,5	-12,0
Consumption of Recycled Fluting as % of total consumption of Raw Materials	37,7	37,4	-0,8
Total Personnel	95.729	99.840	4,1
Shipments to CONVERTERS (in %)	24,8	24,8	13,4
Shipments to TRADERS (in %)	10,9	11,2	13,8

Total Shipments in Millions of m²
(including Non-Members)

	2020	2021	% Change 2020/2021	Members Only
Austria	1.044	1.059	1,44	Y / Y
Benelux	2.730	2.926	7,17	N / N
Croatia	n.a.	n.a.	n.a.	n.a. / n.a.
Czech Republic	1.192	1.285	7,80	N / N
Finland	n.a.	n.a.	n.a.	n.a. / n.a.
France	5.349	5.632	5,29	N / n.a.
Germany	11.195	12.054	7,67	N / N
Hungary	574	611	6,45	N / N
Italy	7.354	8.306	12,95	N / N
Norway	228	240	5,42	Y / Y
Poland	4.722	5.147	9,00	N / N
Portugal	n.a.	n.a.	n.a.	n.a. / n.a.
Romania	807	946	17,22	Y / Y
Spain	5.552	6.122	10,27	N / N
Sweden	660	679	2,88	Y / Y
Turkey	4.815	5.161	7,19	N / N
United Kingdom	5.274	5.554	5,31	N / N
TOTAL EUROPE	51.496	55.722	8,20	

B3

Total Shipments in 000's Tonnes
(including Non-Members)

	2020	2021	% Change 2020/2021
Austria	489	509	4,09
Benelux	1.427	1.535	7,55
Croatia	137	138	0,73
Czech Republic	568	610	7,39
Finland	n.a.	n.a.	n.a.
France	2.633	2.766	5,05
Germany	5.589	6.049	8,23
Hungary	284	304	7,04
Italy	4.000	4.479	11,98
Norway	104	109	4,63
Poland	2.269	2.465	8,64
Portugal	n.a.	n.a.	n.a.
Romania	395	457	15,70
Spain	2.871	3.119	8,63
Sweden	320	341	6,56
Turkey	2.490	2.634	5,78
United Kingdom	2.373	2.505	5,56
TOTAL EUROPE	25.949	28.019	8,00

B4

Shipments of Member Companies in Millions of m²

	2020	2021	% Change 2020/2021
Austria	1.044	1.059	1,44
Benelux	1.955	2.095	7,17
Croatia	295	n.a.	n.a.
Czech Republic	809	874	8,03
Finland	n.a.	n.a.	n.a.
France	3.747	n.a.	n.a.
Germany	8.099	8.659	6,91
Hungary	534	571	6,93
Italy	4.561	5.223	14,51
Norway	228	240	5,42
Poland	4.015	4.397	9,52
Portugal	n.a.	n.a.	n.a.
Romania	807	946	17,22
Spain	4.231	4.666	10,27
Sweden	660	679	2,88
Turkey	3.467	3.456	-0,32
United Kingdom	4.469	4.665	4,39
Membership Total	38.921	37.530	7,60

B5

Shipments of Member Companies in 000's Tonnes

	Membership 2020		Membership 2021	
	Tonnes	% of total shipments	Tonnes	% of total shipments
Austria	489	100,00	509	100,00
Benelux	1.020	71,47	1.099	71,60
Croatia	132	96,35	134	97,10
Czech Republic	384	67,61	415	67,96
Finland	n.a.	n.a.	n.a.	n.a.
France	1.842	69,96	n.a.	n.a.
Germany	4.075	72,91	4.377	72,36
Hungary	264	92,96	284	93,42
Italy	2.536	63,40	2.879	64,28
Norway	104	100,00	109	100,00
Poland	1.921	84,66	2.097	85,06
Portugal	n.a.	n.a.	n.a.	n.a.
Romania	395	100,00	457	100,00
Spain	2.188	76,21	2.377	76,21
Sweden	320	100,00	341	100,00
Turkey	1.793	72,01	1.763	66,93
United Kingdom	2.011	84,75	2.104	83,99
Membership Total	19.474	75,00	18.944	75,00

B6

Total Number of Corrugating Companies
(including Non-Members)

	2020	2021
Austria	6	5
Benelux	n.a.	n.a.
Croatia	5	5
Czech Republic	7	7
Finland	n.a.	n.a.
France	10	11
Germany	42	43
Hungary	8	8
Italy	44	45
Norway	3	3
Poland	45	45
Portugal	n.a.	n.a.
Romania	11	11
Spain	71	71
Sweden	4	4
Turkey	95	105
United Kingdom	27	26
TOTAL EUROPE	378	389

B7

Total Number of Corrugating Plants
(including Non-Members)

	2020	2021
Austria	9	8
Benelux	n.a.	n.a.
Croatia	5	5
Czech Republic	9	9
Finland	n.a.	n.a.
France	62	63
Germany	125	126
Hungary	10	10
Italy	69	69
Norway	3	3
Poland	60	60
Portugal	n.a.	n.a.
Romania	13	13
Spain	89	89
Sweden	10	10
Turkey	119	130
United Kingdom	68	68
TOTAL EUROPE	651	663

B8

Total Number of Corrugators
(including Non-Members)

	2021			Result
	<2m	>2 <2,5m	> 2,5m	
Austria	2	5	2	9
Benelux	n.a.	14	7	21
Croatia	n.a.	1	n.a.	1
Czech Republic	1	6	3	10
Finland	n.a.	n.a.	n.a.	
France	n.a.	n.a.	n.a.	n.a.
Germany	5	68	31	104
Hungary	3	7	1	11
Italy	7	71	20	98
Norway	n.a.	2	1	3
Poland	n.a.	n.a.	n.a.	n.a.
Portugal	n.a.	n.a.	n.a.	
Romania	n.a.	11	2	13
Spain	10	74	11	95
Sweden	n.a.	10	n.a.	10
Turkey	n.a.	n.a.	n.a.	n.a.
United Kingdom	24	43	10	77
TOTAL EUROPE	52	312	88	452

B9

Average Weight of Board in g/m²
(including Non-Members)

	2020	2021
Austria	468	481
Benelux	523	525
Croatia	n.a.	n.a.
Czech Republic	477	475
Finland	n.a.	n.a.
France	492	491
Germany	499	502
Hungary	495	498
Italy	544	539
Norway	456	453
Poland	481	479
Portugal	n.a.	n.a.
Romania	489	483
Spain	517	509
Sweden	485	502
Turkey	517	510
United Kingdom	450	451
TOTAL EUROPE as weighted average	504	503

B10

Die Cut Boxes

(as % of total shipments in m², including Non-Members & Sheet Plants)

	2020	2021
Austria	55,0	51,9
Benelux	31,9	41,3
Croatia	n.a.	38,2
Czech Republic	31,4	29,1
Finland	n.a.	n.a.
France	n.a.	n.a.
Germany	50,1	48,9
Hungary	57,6	58,0
Italy	n.a.	n.a.
Norway	62,8	62,5
Poland	42,4	42,8
Portugal	n.a.	n.a.
Romania	36,8	34,3
Spain	n.a.	n.a.
Sweden	51,0	53,0
Turkey	n.a.	n.a.
United Kingdom	49,9	51,4
TOTAL EUROPE as weighted average	46,3	46,8

B11

Total Consumption of Raw Materials in 000's Tonnes
(including Non-Members)

	2020	2021	% Change 2020/2021
Austria	558	569	1,97
Benelux	1.114	1.232	10,59
Croatia	33	47	43,33
Czech Republic	438	484	10,41
Finland	n.a.	n.a.	n.a.
France	n.a.	n.a.	n.a.
Germany	5.898	6.397	8,46
Hungary	307	333	8,47
Italy	4.120	4.613	11,97
Norway	107	123	15,19
Poland	2.360	2.564	8,63
Portugal	n.a.	n.a.	n.a.
Romania	436	505	15,83
Spain	3.184	3.459	8,64
Sweden	340	355	4,41
Turkey	n.a.	n.a.	n.a.
United Kingdom	2.498	2.728	9,21
TOTAL EUROPE	21.393	23.409	9,40

B12

Consumption of White or Colored Kraftliner

(CCB Classification 02-04-06-08-91-98 ; as % of the total consumption of Raw Materials)

	2020	2021
Austria	5,8	5,0
Benelux	5,4	4,8
Croatia	23,2	1,0
Czech Republic	3,7	3,6
Finland	n.a.	n.a.
France	n.a.	n.a.
Germany	4,9	4,7
Hungary	3,0	1,8
Italy	7,9	7,2
Norway	24,8	27,9
Poland	2,2	2,3
Portugal	n.a.	n.a.
Romania	1,8	1,7
Spain	5,4	3,9
Sweden	8,0	7,0
Turkey	2,2	2,0
United Kingdom	10,5	11,6
TOTAL EUROPE as weighted average	6,0	5,6

B13

Brown Kraftliner

CCB Classification 00-09-90-92-97 ; as % of the total consumption of Raw Materials)

	2020	2021
Austria	14,0	13,2
Benelux	14,9	14,4
Croatia	40,0	5,9
Czech Republic	11,5	11,5
Finland	n.a.	n.a.
France	n.a.	n.a.
Germany	13,7	13,7
Hungary	12,5	16,2
Italy	15,8	14,5
Norway	8,9	14,5
Poland	9,0	8,3
Portugal	n.a.	n.a.
Romania	14,0	12,1
Spain	14,1	13,6
Sweden	28,0	24,0
Turkey	14,8	9,0
United Kingdom	6,8	4,9
TOTAL EUROPE as weighted average	13,1	12,4

B14

WHITE TOP TESTLINER

CCB Classification 70-71-72 ; as % of the total consumption of Raw Materials)

	2020	2021
Austria	8,8	9,4
Benelux	5,5	10,3
Croatia	19,4	12,2
Czech Republic	7,5	7,1
Finland	n.a.	n.a.
France	n.a.	n.a.
Germany	7,6	7,9
Hungary	4,9	6,6
Italy	1,5	1,6
Norway	0,6	0,8
Poland	14,2	14,0
Portugal	n.a.	n.a.
Romania	7,5	7,4
Spain	6,4	6,4
Sweden	n.a.	n.a.
Turkey	5,6	6,0
United Kingdom	n.a.	n.a.
TOTAL EUROPE as weighted average	6,7	7,1

B15

Consumption of Testliners
(CCB Classification 10-11-12-20-21-22-30-32-38-50-55 ;
as % of the total consumption of Raw Materials)

	2020	2021
Austria	28,3	28,9
Benelux	46,6	44,0
Croatia	14,1	35,9
Czech Republic	35,2	35,7
Finland	n.a.	n.a.
France	n.a.	n.a.
Germany	33,4	33,4
Hungary	34,1	30,3
Italy	22,3	24,4
Norway	29,4	21,7
Poland	33,1	37,4
Portugal	n.a.	n.a.
Romania	29,0	31,1
Spain	29,6	31,7
Sweden	31,0	30,0
Turkey	21,9	24,0
United Kingdom	39,9	44,4
TOTAL EUROPE as weighted average	31,8	33,4

B16

Consumption of Other Liners

(CCB Classification 53-74 ; as % of the total consumption of Raw Materials)

	2020	2021
Austria	2,4	2,3
Benelux	4,6	1,1
Croatia	n.a.	2,5
Czech Republic	2,0	2,5
Finland	n.a.	n.a.
France	n.a.	n.a.
Germany	1,1	1,1
Hungary	4,8	3,7
Italy	4,4	4,0
Norway	n.a.	0,0
Poland	2,1	1,9
Portugal	n.a.	n.a.
Romania	7,5	8,0
Spain	5,8	5,6
Sweden	n.a.	n.a.
Turkey	6,5	7,0
United Kingdom	n.a.	n.a.

TOTAL EUROPE as weighted average	3,3	2,9
--	------------	------------

B17

Consumption of Semi-Chemical Fluting

(CCB Classifications 40-46-47 ; as % of the total consumption of Raw Materials)

	2020	2021
Austria	9,8	8,3
Benelux	0,8	0,8
Croatia	3,3	0,7
Czech Republic	0,1	0,1
Finland	n.a.	n.a.
France	n.a.	n.a.
Germany	0,6	0,7
Hungary	3,4	2,1
Italy	6,4	5,1
Norway	18,8	15,5
Poland	0,6	0,6
Portugal	n.a.	n.a.
Romania	5,6	3,6
Spain	4,0	4,1
Sweden	5,0	8,0
Turkey	6,5	7,0
United Kingdom	0,6	0,6
TOTAL EUROPE as weighted average	2,8	2,5

B18

Consumption of Other Fluting (Recycled paper basis)

(CCB Classifications 41-43-44-45-60-61 ; as % of the total consumption of Raw Materials)

	2020	2021
Austria	30,9	32,9
Benelux	22,2	24,6
Croatia	n.a.	41,8
Czech Republic	40,0	39,5
Finland	n.a.	n.a.
France	n.a.	n.a.
Germany	38,7	38,5
Hungary	37,3	39,3
Italy	41,7	43,2
Norway	17,5	19,6
Poland	38,8	35,5
Portugal	n.a.	n.a.
Romania	34,6	36,1
Spain	34,7	34,7
Sweden	28,0	31,0
Turkey	42,5	45,0
United Kingdom	42,2	38,5
TOTAL EUROPE as weighted average	37,7	37,4

B19

Total Number of Personnel

	2020		2021	
	Production Employees	Total Employees	Production Employees	Total Employees
Austria	1.390	1.882	1.390	1.882
Benelux	2.783	3.733	2.837	3.758
Croatia	162	188	156	196
Czech Republic	1.647	2.158	1.493	1.993
Finland	n.a.	n.a.	n.a.	
France	n.a.	n.a.	n.a.	n.a.
Germany	14.891	20.589	15.743	21.477
Hungary	1.324	1.991	1.215	1.843
Italy	6.620	14.910	7.480	16.850
Norway	391	593	384	579
Poland	5.828	8.286	6.048	8.646
Portugal	n.a.	n.a.	n.a.	n.a.
Romania	2.314	3.461	2.568	3.882
Spain	8.414	11.185	8.588	11.312
Sweden	1.033	1.474	1.157	1.625
Turkey	6.487	8.509	6.900	9.100
United Kingdom	11.180	16.770	11.131	16.697
TOTAL EUROPE	64.464	95.729	67.090	99.840

B20

Production per Head in 1000 m²

	2020	2021
Austria	751	762
Benelux	981	1.031
Croatia	n.a.	n.a.
Czech Republic	724	861
Finland	n.a.	n.a.
France	n.a.	n.a.
Germany	752	766
Hungary	434	503
Italy	1.111	1.110
Norway	583	626
Poland	810	851
Portugal	n.a.	n.a.
Romania	349	368
Spain	660	713
Sweden	639	587
Turkey	742	748
United Kingdom	472	499
TOTAL EUROPE	799	831

B21

Nominal Working Time and Productivity per Head

	Working Time [hours / year]		Productivity [m ² /Person hour]	
	2020	2021	2020	2021
Austria	1.707	1.713	440	445
Benelux	1.747	1.743	562	592
Croatia	2.000	2.024	n.a.	n.a.
Czech Republic	1.882	1.889	385	456
Finland	n.a.	n.a.	n.a.	n.a.
France	n.a.	n.a.	n.a.	n.a.
Germany	1.771	1.771	425	432
Hungary	1.848	1.848	235	272
Italy	2.040	2.040	545	544
Norway	1.713	1.697	340	369
Poland	2.024	2.016	400	422
Potugal	n.a.	n.a.	n.a.	n.a.
Romania	1.866	1.860	187	198
Spain	1.768	1.768	373	403
Sweden	1.498	1.505	427	390
Turkey	2.008	2.010	370	372
United Kingdom	1.710	1.710	276	292
TOTAL EUROPE	1.827	1.828	382	399

B22

Shipments to CONVERTERS (STC) Share
(in % of total shipments of m²)

	2020	2021	% Change STC Share 2020/2021
Austria	12,0	12,8	6,67
Benelux	36,0	42,0	16,67
Croatia	n.a.	40,0	n.a.
Czech Republic	36,0	36,2	0,56
Finland	n.a.	n.a.	n.a.
France	n.a.	n.a.	n.a.
Germany	10,0	6,1	-39,00
Hungary	93,0	94,8	1,94
Italy	38,0	39,0	2,63
Norway	5,0	3,6	-27,40
Poland	29,0	30,0	3,45
Portugal	n.a.	n.a.	n.a.
Romania	30,0	35,0	16,67
Spain	14,6	15,1	3,42
Sweden	n.a.	n.a.	n.a.
Turkey	n.a.	n.a.	n.a.
United Kingdom	31,4	32,2	2,55
TOTAL EUROPE	24,8	24,8	

B23

Shipments to TRADERS (STT) Share
(in % of total shipments of m²)

	2020	2021	% Change STT Share 2020/2021
Austria	7,0	7,6	8,57
Benelux	6,0	6,7	11,67
Croatia	n.a.	5,0	n.a.
Czech Republic	n.a.	n.a.	n.a.
Finland	n.a.	n.a.	n.a.
France	n.a.	n.a.	n.a.
Germany	7,8	7,6	-2,56
Hungary	7,0	5,2	-25,71
Italy	n.a.	n.a.	n.a.
Norway	42,0	41,9	-0,34
Poland	21,0	20,0	-4,76
Potugal	n.a.	n.a.	n.a.
Romania	10,0	23,0	130,00
Spain	n.a.	n.a.	n.a.
Sweden	n.a.	n.a.	n.a.
Turkey	n.a.	n.a.	n.a.
United Kingdom	n.a.	n.a.	n.a.
TOTAL EUROPE	10,9	11,2	

Classification of shipment by end-use sector, as a percentage of turnover 2021

	Austria	Benelux	Croatia	Czech Republic	France	Finland	Germany	Hungary	Italy	Norway	Poland	Portugal	Romania	Spain	Sweden	Turkey	United Kingdom	Weighted Average
1	23,4	21,3	6,5	1,1	n.a.	n.a.	3,3	2,5	10,1	13,7	10,9	n.a.	5,2	25,1	n.a.	8,0	n.a.	11,0
2	4,1	2,4	12,5	0,8	n.a.	n.a.	2,5	2,6	3,2	16,4	4,3	n.a.	3,7	8,9	n.a.	12,0	n.a.	4,9
3	3,5	5,8	27,0	10,5	n.a.	n.a.	6,6	5,1	10,5	9,5	6,4	n.a.	4,0	5,3	n.a.	4,0	n.a.	6,6
4	5,2	20,5	24,0	13,5	n.a.	n.a.	24,9	10,3	27,4	13,7	12,8	n.a.	7,9	21,2	n.a.	28,0	n.a.	21,4
5	10,1	6,6	5,4	5,7	n.a.	n.a.	7,1	3,0	10,5	5,5	4,9	n.a.	5,1	9,0	n.a.	6,0	n.a.	7,4
6	7,8	10,9	7,1	17,3	n.a.	n.a.	9,0	21,1	8,8	5,1	10,4	n.a.	12,6	5,3	n.a.	12,0	n.a.	9,5
7	8,1	2,5	4,8	10,6	n.a.	n.a.	5,9	6,7	4,2	7,0	11,6	n.a.	28,6	1,7	n.a.	14,0	n.a.	7,3
8	0,8	0,2	0,2	5,7	n.a.	n.a.	2,4	12,4	2,6	1,1	6,1	n.a.	0,7	0,7	n.a.	1,0	n.a.	2,6
9	3,9	3,6	1,1	4,7	n.a.	n.a.	4,5	4,0	1,0	n.a.	1,2	n.a.	1,0	2,5	n.a.	2,0	n.a.	2,7
10	6,3	4,7	1,4	2,6	n.a.	n.a.	11,7	4,6	2,9	n.a.	2,0	n.a.	4,0	4,7	n.a.	2,0	n.a.	5,6
11	2,1	3,3	2,0	0,8	n.a.	n.a.	1,9	0,4	1,8	5,9	0,4	n.a.	0,2	2,1	n.a.	2,0	n.a.	1,7
12	12,0	1,4	1,0	9,7	n.a.	n.a.	6,0	0,2	9,4	n.a.	8,7	n.a.	1,2	2,3	n.a.	1,0	n.a.	5,6
13	3,7	5,3	2,0	7,9	n.a.	n.a.	5,3	16,7	6,2	1,8	7,5	n.a.	10,7	3,4	n.a.	1,0	n.a.	5,4
14	9,0	11,5	5,0	9,1	n.a.	n.a.	9,0	10,4	1,4	20,2	12,8	n.a.	15,1	7,8	n.a.	7,0	n.a.	8,4
Total	100,0	100,0	100,0	100,0	n.a.	n.a.	100,1	100,0	100,0	100,0	100,0	n.a.	100,0	100,0	n.a.	100,0	n.a.	

Categories for classification:

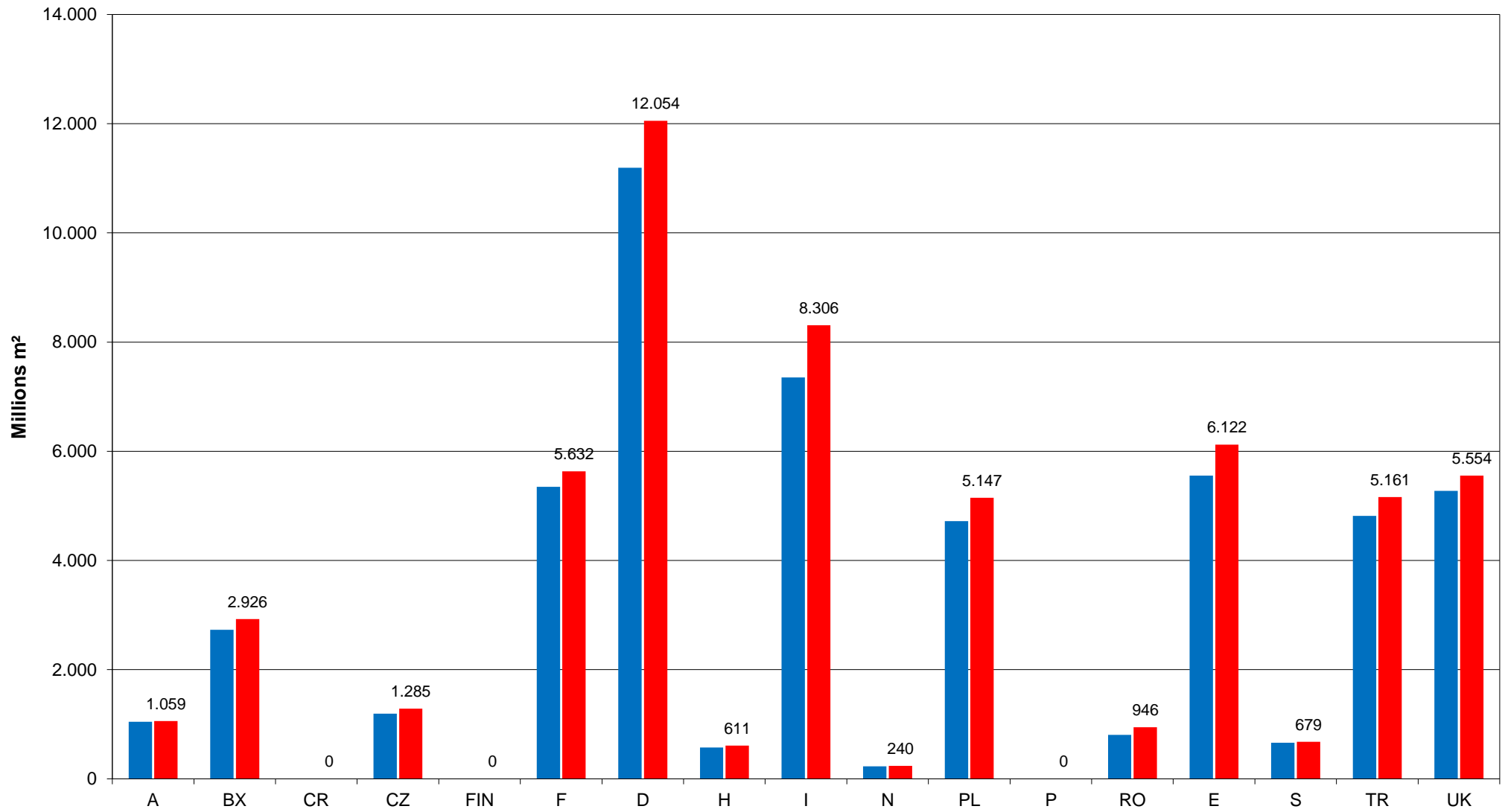
- | | |
|----------------------|-----------------------------|
| 1 Produce | 8 IT, Communication & Audio |
| 2 Fresh meat & fish | 9 Capital goods |
| 3 Dairy products | 10 Auxiliary goods |
| 4 Processed food | 11 Logistics |
| 5 Beverages | 12 Packaging for ecommerce |
| 6 FMCG | 13 Other paper products |
| 7 Long lasting goods | 14 Other excluding sheets |

Fluting Types in % of Total Shipments 2021

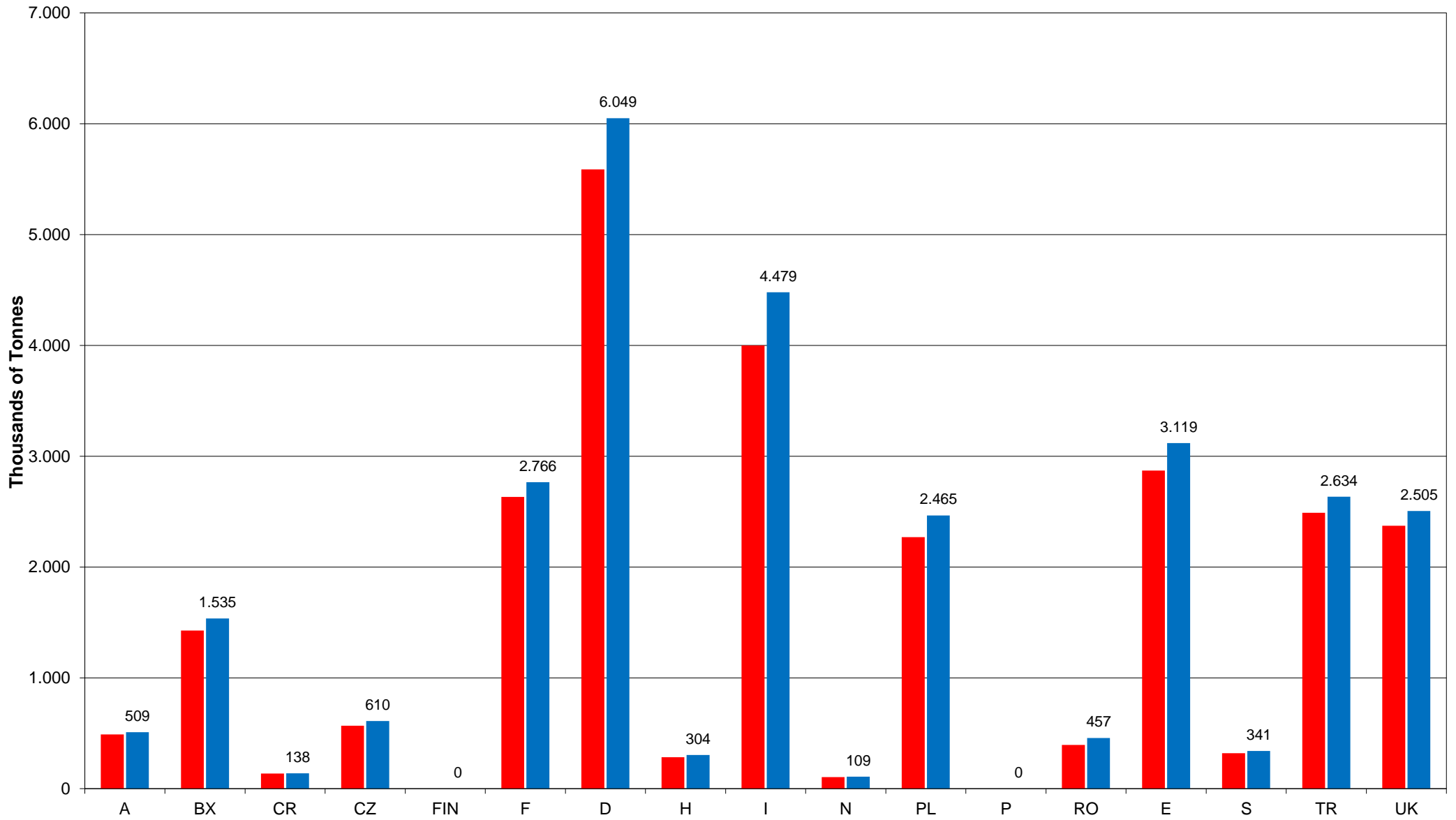
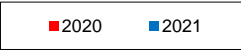
	B-flute	C-flute	BC-flute	E-flute	Micro-FI	Others
Austria	33,5	14,9	11,4	20,3	1,1	18,8
Benelux	48,2	12,7	10,2	7,2	1,0	20,7
Croatia	45,1	16,0	10,0	16,5	2,4	10,0
Czech Republic	49,4	8,7	12,3	16,6	n.a.	13,0
Finland	n.a.	n.a.	n.a.	n.a.	n.a.	n.a.
France	n.a.	n.a.	n.a.	n.a.	n.a.	n.a.
Germany	34,7	11,2	16,7	14,3	1,1	22,0
Hungary	37,2	14,1	17,5	16,8	6,3	8,1
Italy	n.a.	n.a.	n.a.	n.a.	n.a.	n.a.
Norway	49,8	27,6	6,1	14,3	0,5	1,7
Portugal	43,8	14,1	11,5	15,2	0,0	15,4
Poland	n.a.	n.a.	n.a.	n.a.	n.a.	n.a.
Romania	36,8	18,7	21,4	14,4	0,3	8,4
Spain	n.a.	n.a.	n.a.	n.a.	n.a.	n.a.
Sweden	37,0	41,0	n.a.	n.a.	n.a.	22,0
Turkey	22,0	20,0	42,0	9,0	n.a.	7,0
United Kingdom	n.a.	n.a.	n.a.	n.a.	n.a.	n.a.
Total Europe as weighted average	28,1	12,0	13,2	9,4	0,5	8,9

Countries	% of the Products by Number of Printing Colours										% Changes				
	2020					2021					2020 / 2021				
	0	1	2	3	> 3	0	1	2	3	> 3	0	1	2	3	> 3
Austria	35,6	33,7	11,9	8,1	10,7	35,5	34,5	11,6	7,8	10,6	-0,3	2,4	-2,5	-3,7	-0,9
Benelux	34,2	39,4	14,7	6,0	5,7	34,0	39,7	14,8	6,1	5,4	-0,6	0,8	0,7	1,7	-5,3
Croatia	61,3	18,2	8,3	8,3	3,9	54,0	26,5	7,5	7,0	5,0	-11,9	45,6	-9,6	-15,7	28,2
Czech Republic	33,1	35,9	12,5	11,6	6,9	34,2	39,0	14,0	6,4	6,4	3,3	8,6	12,0	-44,8	-7,2
Finland	n.a.	n.a.	n.a.	n.a.	n.a.	n.a.	n.a.	n.a.	n.a.	n.a.	n.a.	n.a.	n.a.	n.a.	n.a.
France	n.a.	n.a.	n.a.	n.a.	n.a.	n.a.	n.a.	n.a.	n.a.	n.a.	n.a.	n.a.	n.a.	n.a.	n.a.
Germany	26,6	34,0	14,8	10,3	14,3	26,6	34,3	15,0	10,2	13,9	0,0	0,9	1,4	-1,0	-2,8
Hungary	39,0	33,0	10,3	6,8	10,9	45,6	27,2	11,9	6,0	9,3	16,9	-17,6	15,5	-11,8	-14,7
Italy	n.a.	n.a.	n.a.	n.a.	n.a.	n.a.	n.a.	n.a.	n.a.	n.a.	n.a.	n.a.	n.a.	n.a.	n.a.
Norway	36,6	30,7	16,1	10,4	6,2	34,5	32,6	17,1	10,0	5,9	-5,9	6,0	6,3	-4,2	-4,7
Poland	46,5	20,1	11,4	12,4	9,6	46,1	25,1	12,7	6,5	9,7	-0,8	24,8	11,1	-47,9	0,8
Portugal	n.a.	n.a.	n.a.	n.a.	n.a.	n.a.	n.a.	n.a.	n.a.	n.a.	n.a.	n.a.	n.a.	n.a.	n.a.
Romania	35,0	39,0	13,0	7,0	6,0	40,4	35,9	11,6	5,4	6,7	15,4	-7,9	-10,8	-22,9	11,7
Spain	n.a.	n.a.	n.a.	n.a.	n.a.	n.a.	n.a.	n.a.	n.a.	n.a.	n.a.	n.a.	n.a.	n.a.	n.a.
Sweden	n.a.	n.a.	n.a.	n.a.	n.a.	n.a.	n.a.	n.a.	n.a.	n.a.	n.a.	n.a.	n.a.	n.a.	n.a.
Turkey	n.a.	n.a.	n.a.	n.a.	n.a.	n.a.	n.a.	n.a.	n.a.	n.a.	n.a.	n.a.	n.a.	n.a.	n.a.
United Kingdom	n.a.	n.a.	n.a.	n.a.	n.a.	n.a.	n.a.	n.a.	n.a.	n.a.	n.a.	n.a.	n.a.	n.a.	n.a.

Shipments in Millions m²

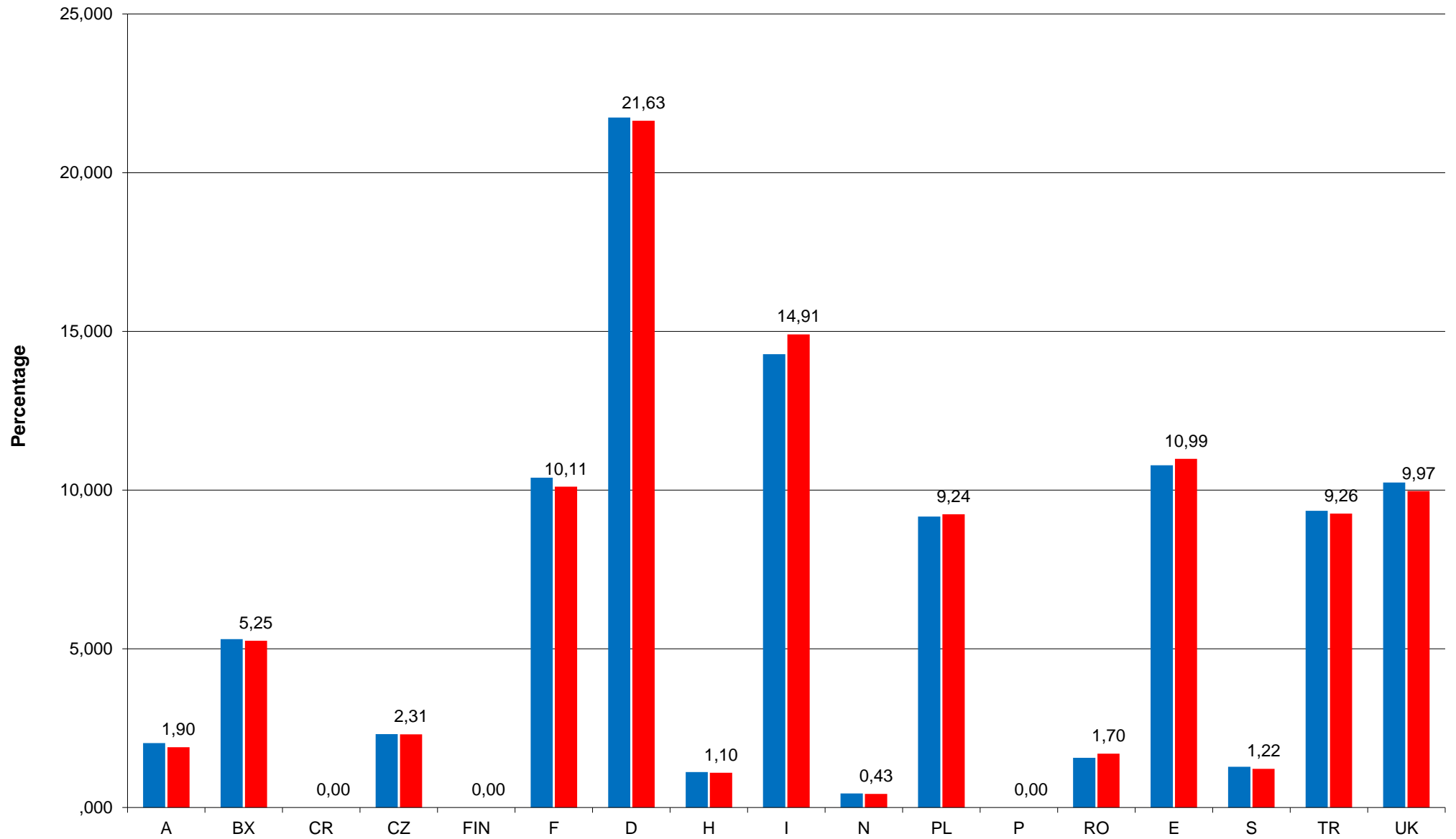


Shipments in '000 Tonnes

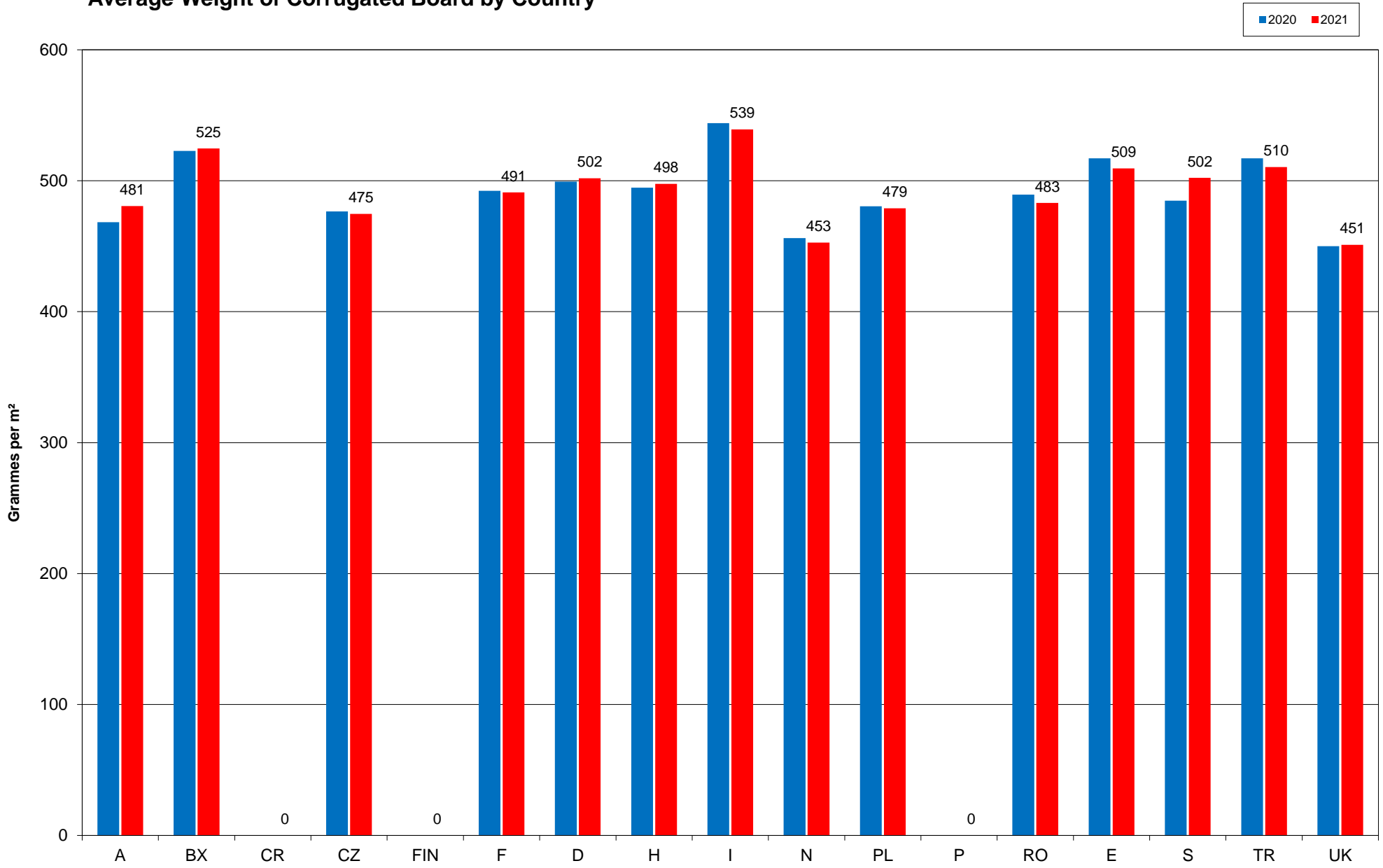


Relative Share of Total Shipments by Country (based on m²)

■ 2020 ■ 2021



Average Weight of Corrugated Board by Country



Fluting Type

